

PARQUE ESTADUAL DE CAMPINHOS

Cerro Azul e Tunas do Paraná
Paraná

Legenda:

— Curvas de nível

▭ Parque Estadual de Campinhos



0 300 600



Metros

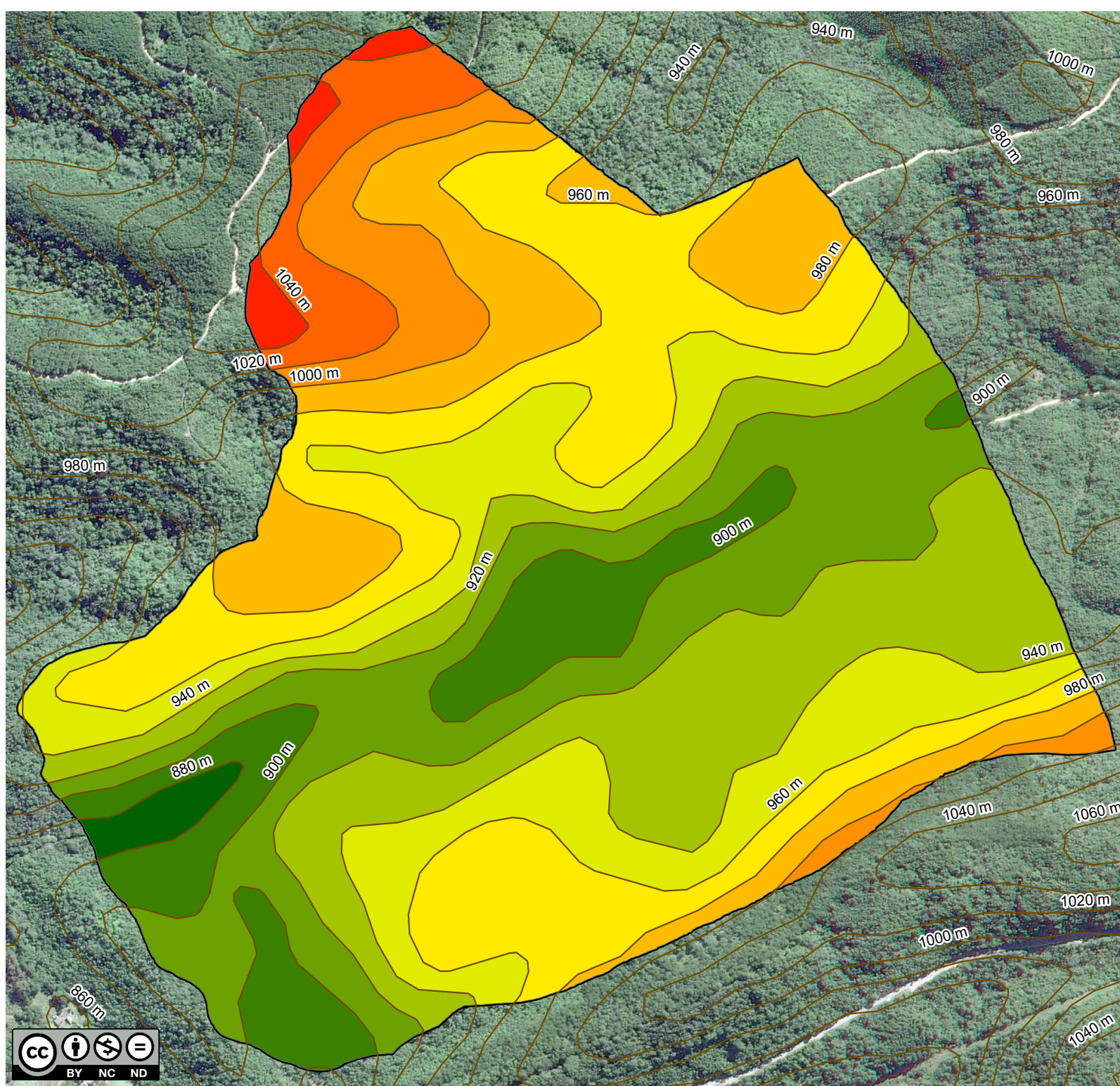
NOTAS DE REFERÊNCIA

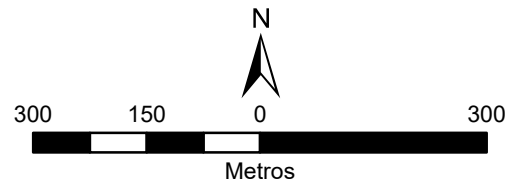
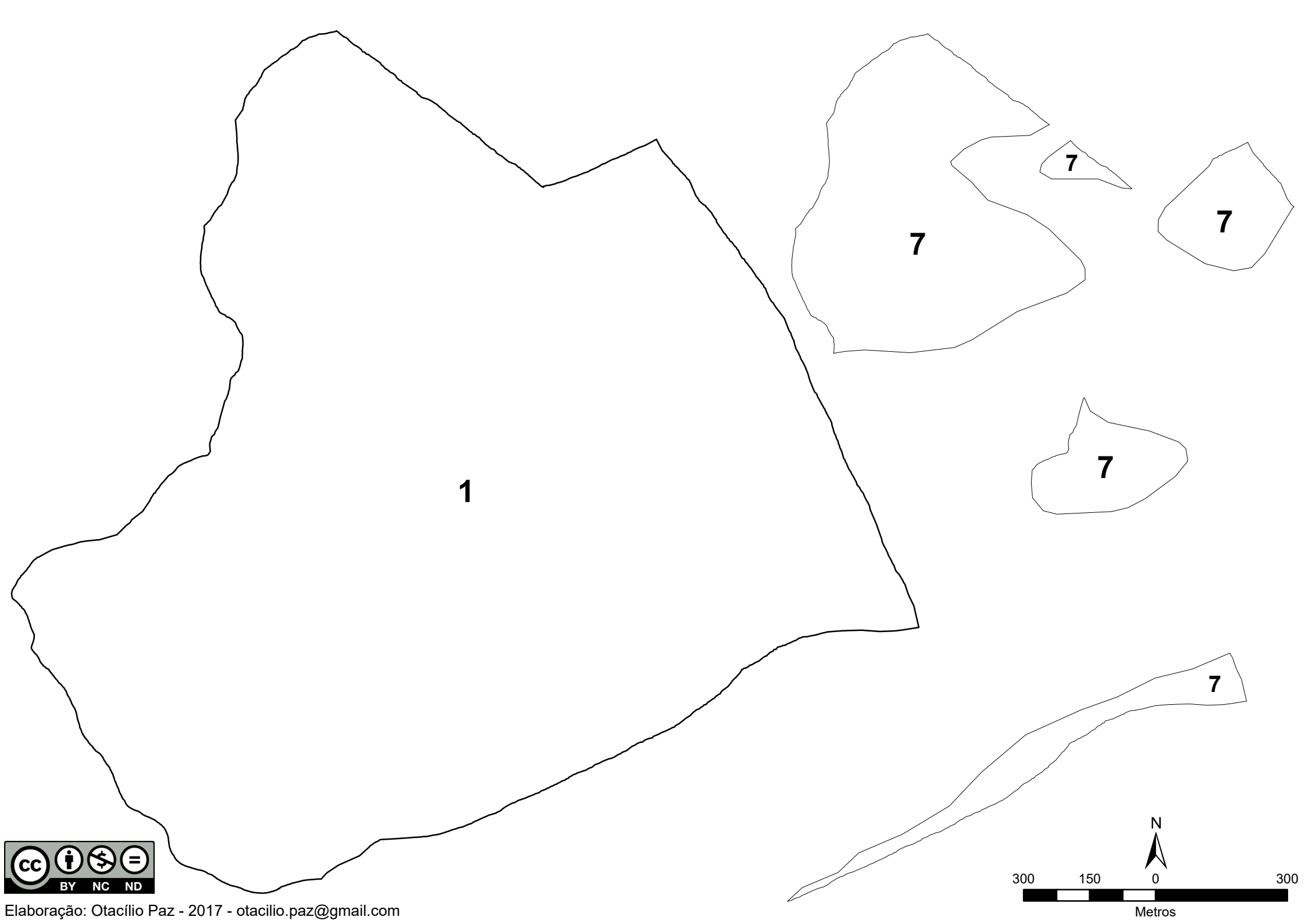
Projeção UTM - Fuso 22 Sul -
Datum Horizontal: SIRGAS 2000
Datum Vertical: Marégrafo de Imbituba
(SC)

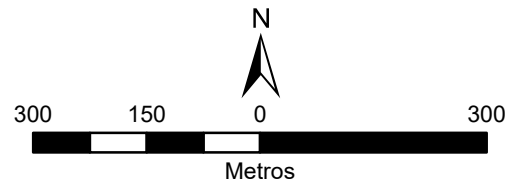
FONTE DE DADOS

Curvas de nível: SRTM (2000)
Limites municipais: ITCG (2015)
Limite Parque Estadual de Campinhos: SEMA/PR (2014)

Elaboração: Otacílio Paz (2017) - otacilio.paz@gmail.com
Licença: CC - NãoComercial 4.0 - Compartilha igual
Internacional

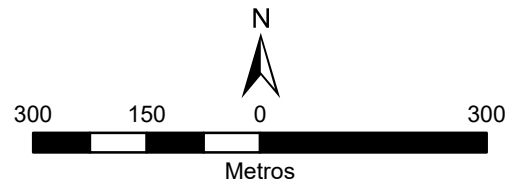








3



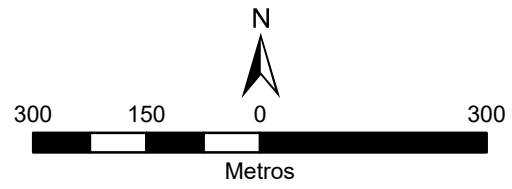


5

6

5

6





4

4

