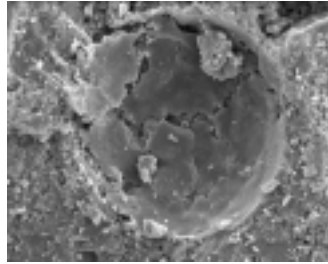
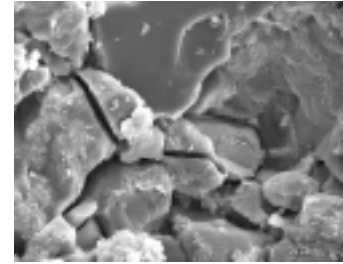


100 x



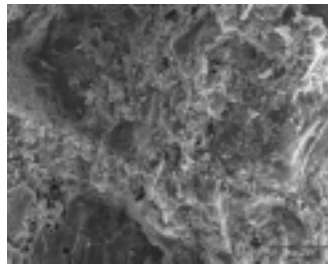
500 x – Formação de gel  
MEV Amostra 2



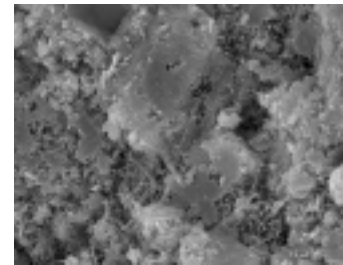
1500 x



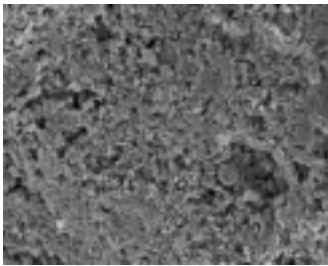
250 x – Gel em expansão



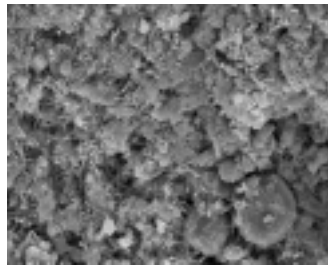
1500 x  
MEV Amostra 9



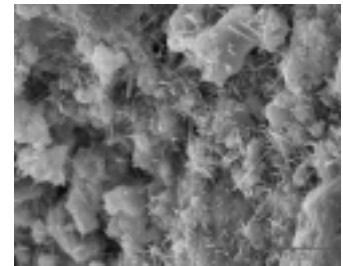
3000 x



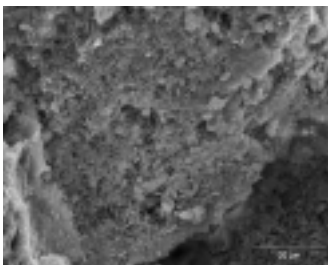
500 x



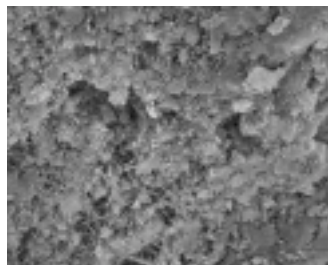
1500 x – Etringita e grãos de  
cimento não-hidratados  
MEV Amostra 24



3000 x



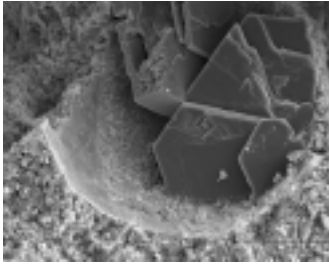
1500 x



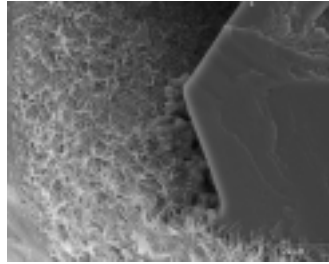
3000 x – Etringita e Ca(OH)<sub>2</sub>  
MEV Amostra 25



5000 x

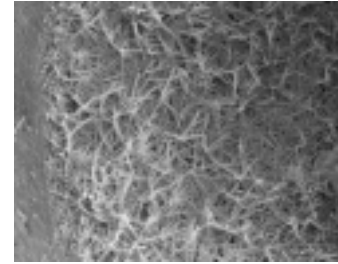


500 x – Formação de  $\text{Ca(OH)}_2$  no interior de um poro

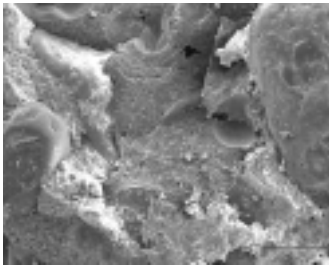


1500 x -  $\text{Ca(OH)}_2$

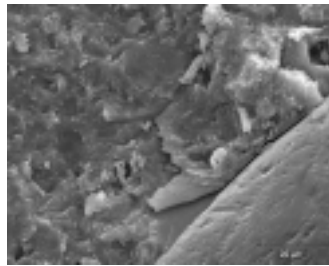
MEV Amostra 33



3000 x - Etringita

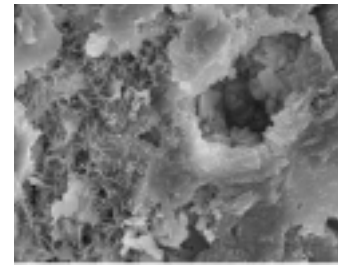


100 x

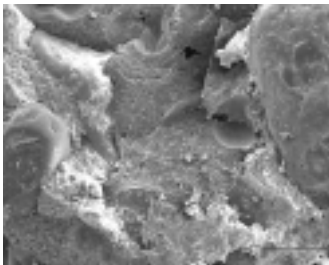


1500 x

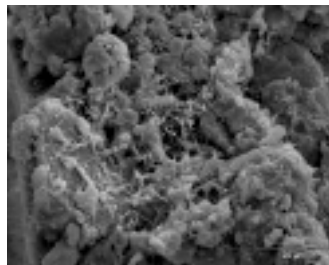
MEV Amostra 61



3000 x

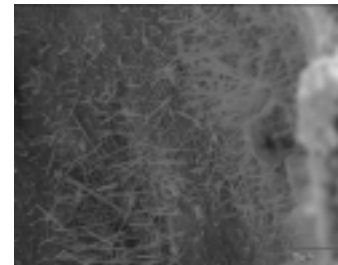


500 x

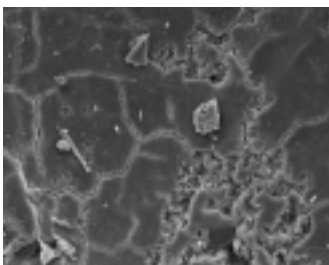


1500 x

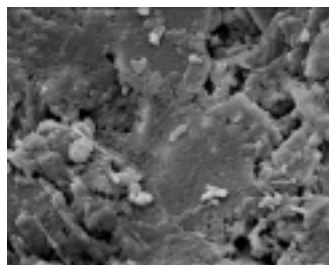
MEV Amostra 62



3000 x

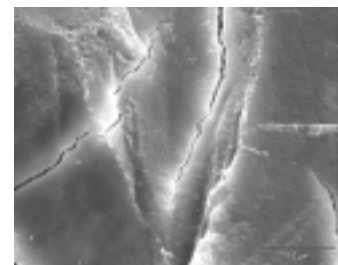


500 x – Formação de gel e grãos de cimento não-hidratados



1500 x

MEV Amostra 68



3000 x - Gel