

# Mapa Mental

## Caderneta de Campo



PROJETO  
EXPEDIÇÕES GEOGRÁFICAS  
UFPR



Pesquisador (a)

---

---

Colégio:

---

---

Ano/Série

---

Local visitado:

---

Cidade: \_\_\_\_\_

Data: \_\_\_\_/\_\_\_\_/\_\_\_\_



**Características físicas do local visitado:**

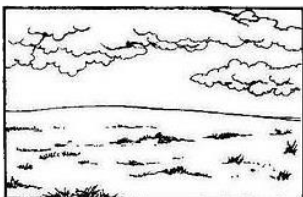
**Qual a vegetação?**

1 para Curitiba

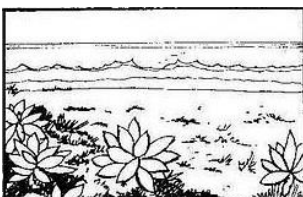
2 para o local visitado



( ) Araucárias



( ) Campos



( ) Restinga



( ) Manguezais

Por que?

---

---

---

---

---

**Como está o tempo?**

1 para Curitiba

2 para o local visitado



( ) Chuva



( ) Nublado



( ) Sol e nuvens



( ) Ensolarado

**Como são as rochas do local visitado?**



Ígnea ( )



Sedimentar ( )



Metamórfica ( )

Por que?

---

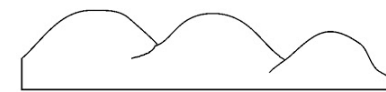
---

---

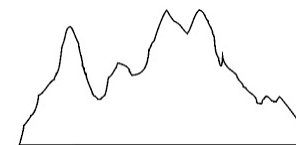
---

---

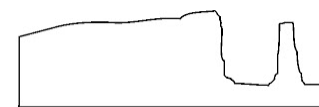
**Como é a forma do relevo da região? Assinale com um X.**



( )



( )



( )



( )



( )

Por que?

---

---

---

---

---